

ORDINANCE TO ANNEX CONTIGUOUS AREAS

BE IT ORDAINED BY THE MAYOR AND COUNCIL OF THE CITY OF SKY VALLEY, and by authority of the same, it is hereby ordained as follows:

- 1 -

Pursant to the authority contained in Georgia Laws 1962, page 119; 1969, page 504 (Georgia Code Annotated Section 69-902), there is hereby annexed to the city limits of the City of Sky Valley, Georgia the property of Sky Valley, Inc., consisting of 784.7 acres in Land Lots 170, 171, 166, 167 and 141 of the Second Land District of Rabun County, Georgia. This annexation is made at the written request of the owner of said property, Sky Valley, Inc. Said property abuts and adjoins the present city limits of the City of Sky Valley.

- 2 -

There is filed as a part of this Ordinance a complete legal description of the property so annexed along with a plat of survey of said property. Said legal description and plat is attached hereto as "Exhibit A".

- 3 -

The above-described lands shall constitute a part of the lands within the corporate limits of the City of Sky Valley as completely and fully as if the limits had been marked and defined by special act of the General Assembly.

All bearings in these descriptions are referred to the true meridian and all distances are expressed in chains and fractions thereof.

TRACT C-1883a, C-1668

All that certain tract of land lying on the waters of Mud Creek, and Kelly Creek, tributaries of the Little Tennessee River and being part of Land Lots 170, 171, 166, 167, 168, and 141, District 2, Rabun County, Georgia and more particularly described as follows:

BEGINNING at Corner 1, formerly designated as Corner 2 of USA Tract S-313, the northeast corner of Lot 168 common to Lot 169 in the second District and on the west line of Lot 92 in the Third District common to land of Sky Valley. A stone witnessed by:

A chestnut oak N 35° E, 0.38 chain scribed B. T. 92 D-3.

A sourwood N 65° W, 0.52 chain scribed B. T. 169 D-2.

A chestnut S 60° W, 0.30 chain scribed B. T. 168 D-2.

Thence along the District line with the east line of Lot 168 and the west line of Lots 92 and 91 common to land of Sky Valley, Spring Lake, and Martha Magruder,

S. 00° 26' E, 53.51 chains to Corner 2 formerly designated as Corner 1 of USA Tract S-313, the southeast corner of Lot 168 common to Lot 141, District 2 and on the west line of Lot 91, District 3. A chestnut post in a mound of stones witnessed by:

A 22" birch N 25° W, 0.11 chain scribed B. T. 168 D-2.

A 22" white oak N 78° 30' E, 0.36 chain scribed B.T. 91 D-3.

Thence, continuing along the District line between

Lots 141 and 91 common to land of Magruder,
S 02° 13' E, 2.871 chains to Corner 3, a point on the
south side of the ridge top on the western side
of Flint Knob. Set a 1/2 inch iron pin in a mound
of stones and witnessed by:

16" white oak N 16° 30' W, 0.15 chain, blazed
and scribed B.T.

14" chestnut oak S 72° 30' W, 0.25 chain blazed
and scribed B.T.

— Thence, with a marked line about 25 feet south or
southwest of the ridge top through Lots 141, 168,
and 167 common to USA Tracts S-377, S-313, and
S-303 the following courses and distances:

N 75° 09' W, 1.983 chains to an iron pin in a mound of
stones,
S 82° 55' W, 1.348 chains
S 73° 09' W, 1.051 chains
S 56° 16' W, 0.753 chain
S 74° 38' W, 0.555 chain
S 46° 17' W, 1.088 chains
S 49° 22' W, 0.976 chain
S 59° 53' W, 1.365 chains
S 44° 48' W, 4.115 chains
S 68° 37' W, 1.673 chains
N 86° 11' W, 1.037 chains
S 81° 43' W, 1.655 chains
S 64° 28' W, 2.161 chains
S 78° 30' W, 2.151 chains to an iron pin in a mound of stones,
N 70° 48' W, 3.656 chains (to an iron pin in a mound of stones
N 61° 55' W, 1.626 chains on the east side of a trail),
N 47° 29' W, 3.128 chains
N 61° 54' W, 2.014 chains
N 66° 18' W, 1.565 chains
N 40° 13' W, 1.454 chains
N 39° 05' W, 2.688 chains
N 61° 14' W, 2.079 chains
N 60° 17' W, 2.469 chains
N 67° 15' W, 1.478 chains
N 79° 55' W, 1.361 chains
N 74° 32' W, 1.499 chains
S 86° 19' W, 2.489 chains to an iron pin in a mound of stones,
N 49° 45' W, 2.254 chains to an iron pin in a mound of stones,

N 51° 24' W, 1.796 chains
 N 77° 32' W, 2.075 chains
 N 75° 17' W, 3.243 chains
 N 51° 24' W, 1.602 chains
 N 36° 21' W, 1.957 chains
 N 19° 03' W, 1.627 chains
 N 04° 34' E, 2.282 chains
 N 13° 10' E, 0.988 chain
 N 21° 32' E, 0.991 chain
 N 07° 39' E, 1.195 chains
 N 05° 46' E, 0.654 chain
 N 03° 52' W, 3.180 chains to an iron pin in a mound of
 stones,
 N 21° 04' E, 0.924 chain to an iron pin in a mound of
 stones,
 N 21° 51' W, 1.755 chains
 N 22° 23' W, 1.270 chains
 N 02° 44' E, 1.192 chains
 N 18° 05' W, 1.413 chains
 N 01° 13' W, 1.933 chains
 N 30° 36' W, 1.408 chains
 N 19° 06' W, 3.046 chains to an iron pipe with a 3"
 aluminum cap on the southwest side of a spur ridge.
 Thence, continuing along the southwest side of the
 spur ridge,
 N 46° 35' W, 3.256 chains,
 N 65° 22' W, 1.969 chains,
 N 59° 11' W, 2.652 chains
 N 66° 25' W, 2.067 chains
 N 61° 30' W, 2.550 chains
 N 60° 32' W, 3.687 chains
 N 77° 03' W, 3.840 chains
 N 70° 42' W, 2.740 chains
 S 83° 33' W, 2.214 chains
 S 59° 29' W, 1.593 chains
 N 29° 42' W, 1.314 chains
 N 17° 47' W, 2.263 chains
 N 30° 21' W, 2.369 chains
 N 39° 39' W, 1.558 chains
 N 43° 21' W, 1.370 chains
 N 70° 40' W, 2.196 chains
 N 33° 32' W, 4.60 chains (a total of 128.44 chains) to
 Corner 4

10" scarlet oak S 25° W, 0.08 chain blazed
and scribed B. T.

12" scarlet oak S 24° 30' E, 0.43 chain blazed
and scribed B. T.

Thence, with the line between Lots 167 and 170
common to USA Tract S-303,
S 89° 12' W, 24.78 chains to Corner 5, the southwest
corner of Lot 170 common to Lot 167, and designated
as being on the east line of Lot 171. Set a 1/2" :
iron pin in a mound of stones, and witnessed by:

20" chestnut oak N 40° E, 0.05 chain, blazed
and scribed B. T.

12" hickory S 47° E, 0.255 chain, blazed and
scribed B. T.

Thence with the line between Lots 171 and 167 common
to USA Tract S-303,
S 01° 11' E, 6.624 chains to Corner 6, a point on top of
a ridge common to land of Jim Taylor. Set an iron
pipe with a 3" aluminum cap, and witnessed by:

12" Virginia pine S 39° E, 0.39 chain, blazed and
scribed B. T.

16" scarlet oak S 2° E, 0.43 chain, blazed and
scribed B. T.

Thence, along and with the meanders of the top of a
ridge:

N 65° 41' W, 1.970 chains
S 88° 35' W, 1.806 chains
S 87° 30' W, 1.398 chains
S 77° 32' W, 1.167 chains to a point on west edge of a road,
S 73° 32' W, 1.158 chains
N 88° 25' W, 1.150 chains
N 43° 05' W, 1.505 chains
N 56° 13' W, 1.386 chains
N 57° 45' W, 1.129 chains
N 61° 05' W, 1.468 chains
N 57° 35' W, 1.507 chains
N 88° 20' W, 1.289 chains
N 80° 29' W, 1.688 chains
S 86° 50' W, 1.279 chains to Corner 7, a 14" buckeye tree
on the west edge of a small branch and on the north
bank of Kelly Creek. Thence, down and with the
meanders of the center of Kelly Creek, in a west-
southwest direction,

26.32 chains more or less to Corner 8, formerly designated as corner 1 of Exception 1 of USA Tract S-310 a point on the west bank of Kelly Creek and on line between Lots 166 and 171. A stone in a mound of stones witnessed by:

a 16" hickory N 39° 30' W, 0.23 chain scribed B. T. 171.

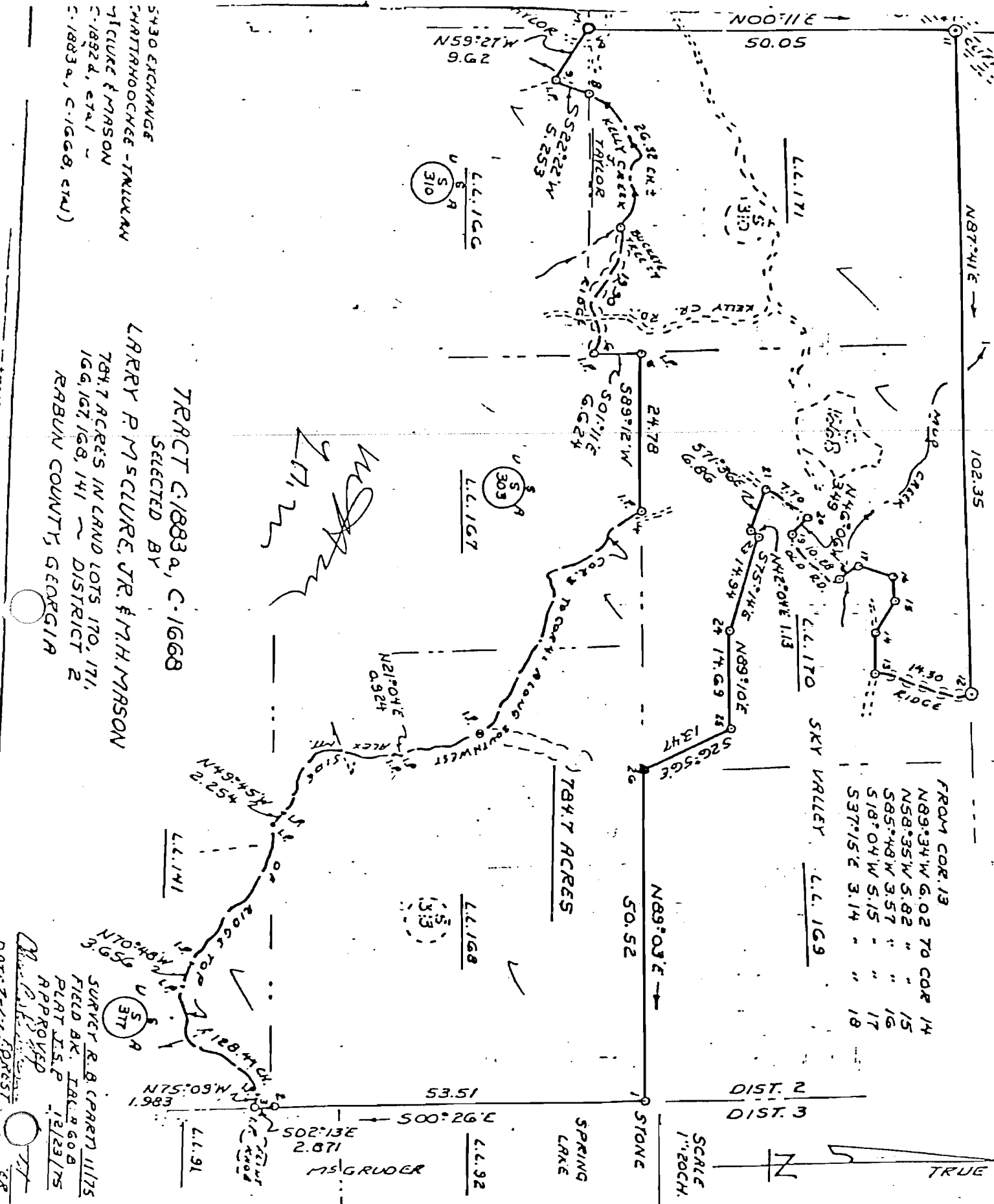
a 14" poplar S 40° E, 0.175 chain scribed B. T. 166.

Thence, one course common to USA Tract S-310, S 22° 22' W, 5.253 chains to Corner 9, being Corner 2 of USA Tract S-310, a point on the east side of Kelly Creek. An iron pipe with a 3" aluminum cap at a white oak stump, witnessed by:

A 24" white oak N 75° E, 0.22 chain scribed B. T. 166.

Thence, one course through Lot 166, common to land of Melvin Taylor,
N 59° 27' W, 9.62 chains to Corner 10, formerly designated as Corner 1 of USA Tract S-310, the southwest corner of Lot 171 common to Lots 172, 165, and 166. A standard Forest Service concrete monument. Thence, along the former boundary and with sixteen consecutive corners (reversed) of USA Tract S-310: One course with the line between Lots 171 and 172,
N 00° 11' E, 50.05 chains to Corner 11 (formerly Corner 29 of Tract S-310) the northwest corner of Lot 171 common to Lots 172, 193, 194. An inaccessible point on the face of a cliff. Thence, with the line between Lots 171, 194, and on between Lots 170, 195, common to land of Larry McClure,
N 87° 41' E, 102.35 chains to Corner 12, (28) a point on a ridge. An iron pipe, thence down and with the meanders of the ridge,
S 14° 15' E, 1.76 chains,
S 11° 06' W, 2.11 chains
S 18° 29' W, 4.11 chains
S 22° 42' W, 3.12 chains
S 12° 22' W, 1.71 chains
S 03° 14' E, 1.49 chains to Corner 13, (27) a point at an old road. Thence,
N 89° 34' W, 6.02 chains to Corner 14, (26), an iron pipe.
Thence,

N 58° 35' W, 5.82 chains to Corner 15 (25), an iron pipe. Thence,
 S 85° 48' W, 3.57 chains to Corner 16 (24), an iron pipe. Thence,
 S 18° 04' W, 5.15 chains to Corner 17 (23), an iron pipe. Thence,
 S 37° 15' E, 3.14 chains crossing Mud Creek to Corner 18 (22), an iron pipe. Thence to and along an old road
 S 13° 49' E, 1.05 chains to the old road,
 S 46° 53' W, 1.57 chains
 S 41° 45' W, 2.47 chains
 S 49° 19' W, 3.92 chains
 N 84° 33' W, 1.27 chains to Corner 19 (21), a point in the road. Thence,
 N 46° 06' W, 3.49 chains to Corner 20 (20) a point in the road. Thence meandering with the old road,
 S 51° 23' W, 1.28 chains,
 S 32° 57' W, 2.71 chains
 S 38° 53' W, 3.71 chains to Corner 21 (19), an iron pipe. Thence,
 S 71° 36' E, 6.86 chains to Corner 22 (18) an iron pipe. Thence,
 N 42° 04' E, 1.13 chains to Corner 23 (17), an iron pipe. Thence,
 S 75° 14' E, 14.94 chains to Corner 24 (16) an iron pipe. Thence,
 N 89° 10' E, 14.69 chains to Corner 25 (15) an iron pipe. Thence,
 S 26° 56' E, 13.47 chains to Corner 26 being formerly designated as Corner 14 of USA Tract S-310 and Corner 3 of USA Tract S-313. A stone in a mound of stones at the southeast corner of Lot 170 common to Lot 169 and on the north line of Lot 168. Thence, with the line between Lots 168 and 169,
 N 89° 03' E, 50.52 chains to the place of BEGINNING Containing 784.7 acres more or less. The boundary above described encloses and includes all of USA Tract C-1668 containing 13.89 acres as acquired from Mrs. J. H. Lambert in 1951; part of USA Tract S-313 as acquired from Charles A. Rafter in 1917; part of USA Tract S-377 as acquired from W. J. Green in 1917; part of USA Tract S-303 as acquired from Himmelberger - Harrison Lumber Company in 1918; and part of USA Tract S-310 as acquired from the Rabun Orchards Company in 1917.



FROM COR. 13

N89°34'W	6.02	TO COR 14
N58°35'W	5.82	" 15
S85°48'W	3.57	" 16
S18°04'W	5.15	" 17
S37°15'E	3.14	" 18

DIST. 2
DIST. 3

SCALE
1"=20CH.



TRACT C-1883a, C-1668
SELECTED BY

LARRY P. M'SCLURE, JR. & M.H. MASON
784.7 ACRES IN LAND LOTS 170, 171,
166, 167, 168, 141 ~ DISTRICT 2
RABUN COUNTY, GEORGIA

STATE EXCHANGE
MARTINDALE - TRILUKAN
M'CLURE & MASON
C-1892d, et al
C-1883a, C-1668, et al

SURVEY R.B. (PART 1175)
FIELD BK. TAB. 608
PLAT I.S.P. 12/23/75
APPROVED
M. P. [Signature]
DATE 2-17-1981

SOURCE OF TITLE

Tract C-1668: Acquired from Mrs. J. H. Lambert (formerly Mrs. Jessie M. Greenwood) by deed dated August 13, 1951, and recorded in Deed Book Y-2, Page 502, in the records of Rabun County, Georgia.

Tract C-1883a: A portion of USA Tract S-313 which was acquired in condemnation action styled, "The United States of America vs. 1158.73 acres of land in Lots 168 and 32, District 2; Lots 12, 21 and 111, District 3; and Lot 43, District 4, all in Rabun County, Georgia, known as the Charles A. Rafter Lands - and Charles A. Rafter, et al": At Law No. 73, in the District Court of the United States for the Northern District of Georgia, Eastern Division. Judgment entered November 16, 1916;

and

A portion of USA Tract S-310 which was acquired in condemnation action styled, "The United States of America vs. 987.62 acres of land in Land Lots 171, 116, 137, 144, 166 and 170, District 2, Rabun County, Georgia, known as the Rabun Orchards Company Lands, and the Rabun Orchards Company, et al": At Law No. 74 in the District Court of the United States for the Northern District of Georgia, Eastern Division. Judgment entered November 16, 1916;

and also

A portion of USA Tract S-377 and USA Tract S-303 which were acquired in condemnation action styled, "The United States of America vs. 2558.69 acres of land in Land Lots 25, 138, 139, 140, 167, 113, 114, 115, 141, 142 and 143; District 2 and Land Lots 19 and 20, District 3, Rabun County, Georgia, known as the Himmelberger-Harrison Lumber Company, Caroline Thomas, and W. J. Green Lands, Himmelberger-Harrison Lumber Company, et al": At Law No. 99 in the District Court of the United States for the Northern District of Georgia, Eastern Division. Judgment entered April 20, 1917.

SUBJECT to easements for existing roads, highways and public utilities.

CERTIFICATION

I, Larry P. McClure, Jr., Mayor of the City of Sky Valley, Georgia, do hereby certify that the foregoing is a true and correct copy of the Ordinance regarding annexation of the property of Sky Valley, Inc. to the City of Sky Valley, Georgia. Said Ordinance was passed at a meeting of the City Council of Sky Valley, Georgia held on October 26, 1978.

This 31 day of October, 1978.

Larry P. McClure, Jr.
Larry P. McClure, Jr.

Sworn to and subscribed
before me this 31 day
of October, 1978.

Irwin Friedman
Notary Public

MY COMMISSION EXPIRES:

Sept. 14 1982